



Jewish Community Services of South Florida Annual Report 2021-2022

Our Community's Safety Net

2021-2022: A Year of Blessing and Opportunity for Our JCS Family

Jewish Community Services of South Florida (JCS) is privileged to be South Florida's safety-net service provider. This year presented an array of significant challenges and remarkable opportunities. At JCS, "COMMUNITY" is our middle name, and we see our community's evolving needs as the driver and guide to serve the frail and vulnerable among us. The generous support and confidence of our community partners, funders, lay leaders, and community volunteers, along with the inspiring JCS professional and support staff, have powered us through tragic events and unprecedented times. We are incredibly proud of our staff for rising to meet each and every challenge, and we are committed to continuing to provide a single high-standard of quality care to ALL clients in an inclusive, welcoming, and affirming manner.

SERVICE: Our JCS team, in collaboration with our valued partners and hundreds of community volunteers, have scaled to meet the needs of tens of thousands of clients and their families. We continue to meet clients where they are, with cultural humility and person-centered, trauma-informed care. Our services included addressing food security, economic stability, emotional healing, case management, information and referrals, and advocacy. At JCS, we believe in the value of inclusion, diversity and equity – these values are of utmost importance to the Jewish faith. We embrace the frail and vulnerable among us with compassion, respect, and dignity.

RESILIENCE AND INNOVATION: Based on use of best professional practices, innovation and creativity, our resilient team has survived and thrived through two years of significant emotional, economic and physical hardship attributed to the COVID-19 pandemic, and the tragic losses and pain resulting from the Champlain Towers South collapse. In the midst of these crises, we have been blessed with the opportunity to welcome new Americans to South Florida through our partnership with the Hebrew Immigrant Aid Society (HIAS), resettling Afghan refugees, and we are now providing supportive services to Ukrainian refugees.

STRENGTH AND STABILITY: Our safety-net of services is wider and more resilient than ever. The financial health and stability of our organization has never been stronger. This gives rise to the opportunity to create an endowment fund to ensure agency continuity into our second century of service. Our team of professionals and support staff, guided by an incredibly supportive Board of Directors, have made it possible for us to honor our mission and vision.

SURFSIDE RESPONSE INITIATIVE: This year, in addition to the ongoing and increasing needs arising from the pandemic, our community suffered a horrific tragedy and lost 98 precious souls from the catastrophic collapse of the Champlain Towers South residential building in Surfside. Countless community-wide other families lost their homes, possessions and personal treasures. Our team immediately sprang into action and provided affected individuals and families with financial, nutritional, emotional and physical support. From the day of the building collapse on June 24, 2021, to the present day, JCS staff have been engaged in providing caring, trauma-focused services, economic assistance, housing support, and advocacy to sustain survivors and families who lost loved ones.

These services continue on to ensure our Surfside clients receive the support they need to navigate their healing and recovery process. Our team achieved this work due to the significant support of our partners. We are grateful to the Greater Miami Jewish Federation and The Shul of Bal Harbour for their remarkable contributions to address communitywide, pandemic-specific needs, and for ongoing support to our Surfside Response Initiative families. We recognize the Consulate General of Israel, Miami Marlins Foundation, The Miami Foundation, Florida Department of Children and Families, Thriving Mind South Florida, United Way Miami, Catholic Charities of the Archdiocese of Miami, Miami-Dade County, FEMA, American Red Cross Greater Miami and the Keys Chapter, Coral Gables Community Foundation, Key Biscayne Community Foundation, and Hatzalah of South Florida for making our continued work on behalf of Surfside survivor families possible.

This year, the JCS-led crisis response and collaborative care efforts spanned a variety of counties, and engaged local, state, and global partners, including ones in Israel, dozens of local Jewish community and religious agencies, and a variety of government agencies at the national level. The support of our partners allowed us to rise and adapt to a new reality, with innovative solutions, to ensure all service programs continued throughout the agency without missing a beat.

We have been blessed with the ability to strengthen the agency's financial capacity and sustainability, invest in our staff, serve thousands of additional clients, and keep up with the rising costs of our dynamic market economy. We remain true to our four key pillars of service: Food Security, Mental Health and Crisis Counseling, Case Management, and Information and Referral. Our Contact Center has expanded and innovated to reach tens of thousands of individuals in need of essential life-sustaining resources, along with a chatline that now serves the entire

country for suicide prevention and crisis counseling services.

Our ability to respond and scale to our community's needs reflects the power of your generosity and caring hearts. We deeply appreciate the caring support we receive from over 800 volunteers of all ages, our community's rabbinic leaders and their congregations, public and private schools and leaders of a broad array of faith-based organizations, philanthropic foundations, elected and professional government leaders, and the generosity of individuals of all ages and backgrounds representing our vibrant, diverse community.

Our agency's five year strategic plan has just been finalized to map out the future in the short term. As we continue to assess the needs of our community to ensure relevance and resilience, we will also look for a decade-long strategic plan focused on measurable positive impacts. We are excited to begin our work on a JCS Endowment and to explore our first foray into affordable housing.

On behalf of our Board of Directors and team of professional and support staff, we thank you! We look forward to the community's ongoing support in ensuring the future of JCS for many generations to come.



A handwritten signature in black ink, appearing to read 'JR'.

Jonathan Raffé
Board Chair



A handwritten signature in black ink, appearing to read 'Miriam Singer'.

Miriam Singer
President & CEO

Meet Our Board of Directors



2021-2022 Board Officers

Jonathan Raiffe
Board Chair

Mitchell Morris
Chairman

Scott Singer
Chair Elect

Gil Bonwitt
Treasurer

Liliane Fuhrman
Secretary

Abe Rudman*
Vice Chair and Immediate
Past Board Chair

Board of Directors

Jassi Antebi
Dr. Helen Chaset
Michelle S. Diener
Dr. Mark W. Gordon
Shelley Niceley Groff*
Daniel Jacobson
Michael Levine

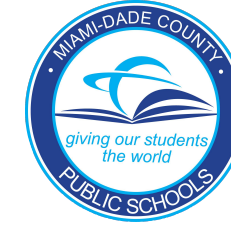
Robert J. Merlin*
Robert B. Newman
Alberto Perlman
Vanessa Ressler
Marc Rubenstein
Joy Spill*
Kenneth Tobin

Yolanda Valencia
Debra Wechsler
Orit Weitzman
Miriam Singer
President & CEO

**Past Board Chair*

Funders

Thank you to our partners and funders for their continued support!



Sponsored by Jewish Community Services of South Florida, Thriving Mind South Florida and the State of Florida, Department of Children and Families.



Responding in Times of Crisis

JCS' Response to the Community's COVID-19 Pandemic Needs

Throughout the ongoing COVID-19 pandemic, JCS swiftly scaled to meet our community's varying needs, and provided financial, nutritional, mental health, and emotional support.



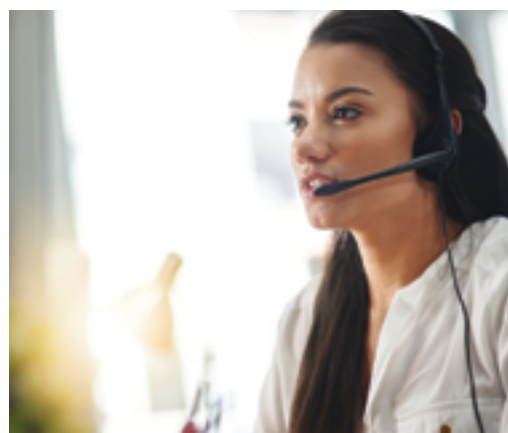
Nutritional Support

In collaboration with Greater Miami Jewish Federation, JCS continued to participate in community food distributions to help meet our community's growing need for nutritional support. The JCS Kosher Food Bank's legacy in providing life-sustaining food support also expanded to include a home goods store for their clients and Surfside survivor clients.



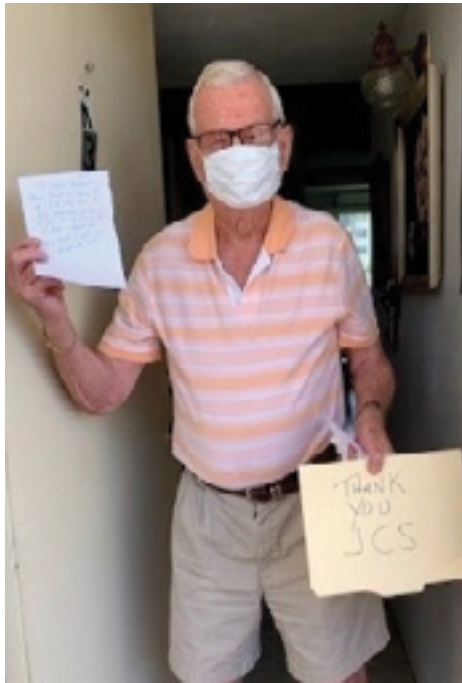
Helpline Services

JCS' 211 Miami answered tens of thousands of calls from community members looking for information and referrals, community resources, and crisis counseling during the unprecedented crises our community faced. Through JCS' 211 Miami program, our team launched a suicide prevention chat line as an alternate method of communication and support.



JCS Delivers

JCS launched JCS Delivers, a tailored, food shopping, check-in, and delivery program for homebound seniors in Miami-Dade County.



Mental Health Counseling

Our community experienced a significant increase in the need for mental health counseling and support during the pandemic. JCS scaled to meet our community's needs, and provided thousands of hours of mental health counseling sessions to hundreds of clients who called on us for support.



Economic Support

JCS provided millions of dollars in economic relief to clients in crisis impacted by the pandemic and the Surfside tragedy. Rental support, utilities, prescriptions, personal care items, and more were provided.



Responding in Times of Crisis

JCS REFUGEE ASSISTANCE PROGRAM (J-RAP)

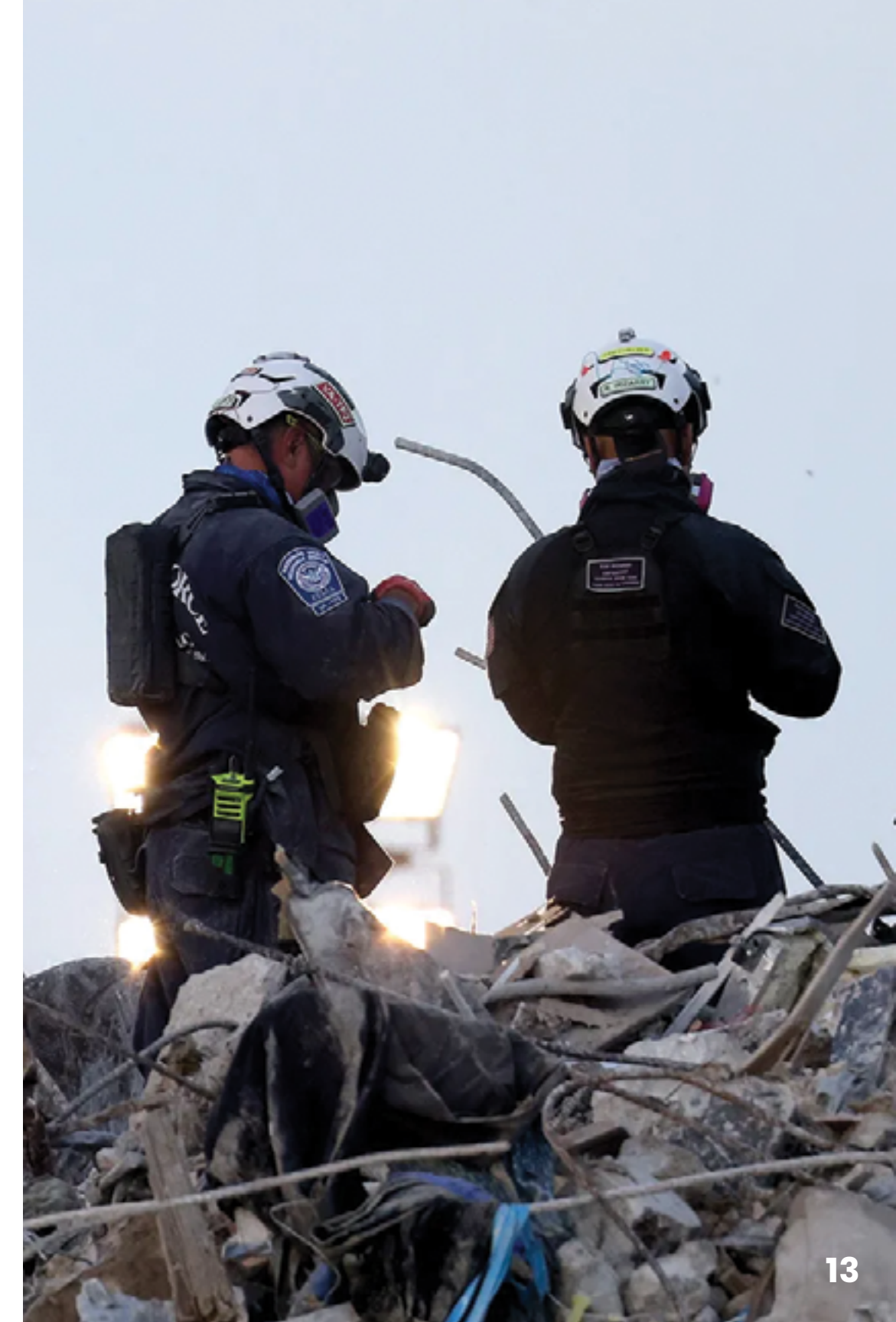
In light of the Afghan humanitarian crisis, JCS was invited to partner with the Hebrew Immigrant Aid Society (HIAS) to help resettle Afghan refugees in South Florida. JCS has resettled 53 refugees. JCS is now providing resettlement and support for Ukrainian refugees fleeing their war-torn homeland.



SURFSIDE

In the aftermath of the Champlain Towers South building collapse, JCS immediately responded with trauma-focused care to assist those impacted by providing nutritional, financial, mental health, and emotional support. Our case management and mental health teams continue to provide ongoing supportive services to survivors and family members impacted, and will do so for the long term. JCS engaged with dozens of local, national, and international teams to strengthen our safety net of services for all affected by this traumatic event.

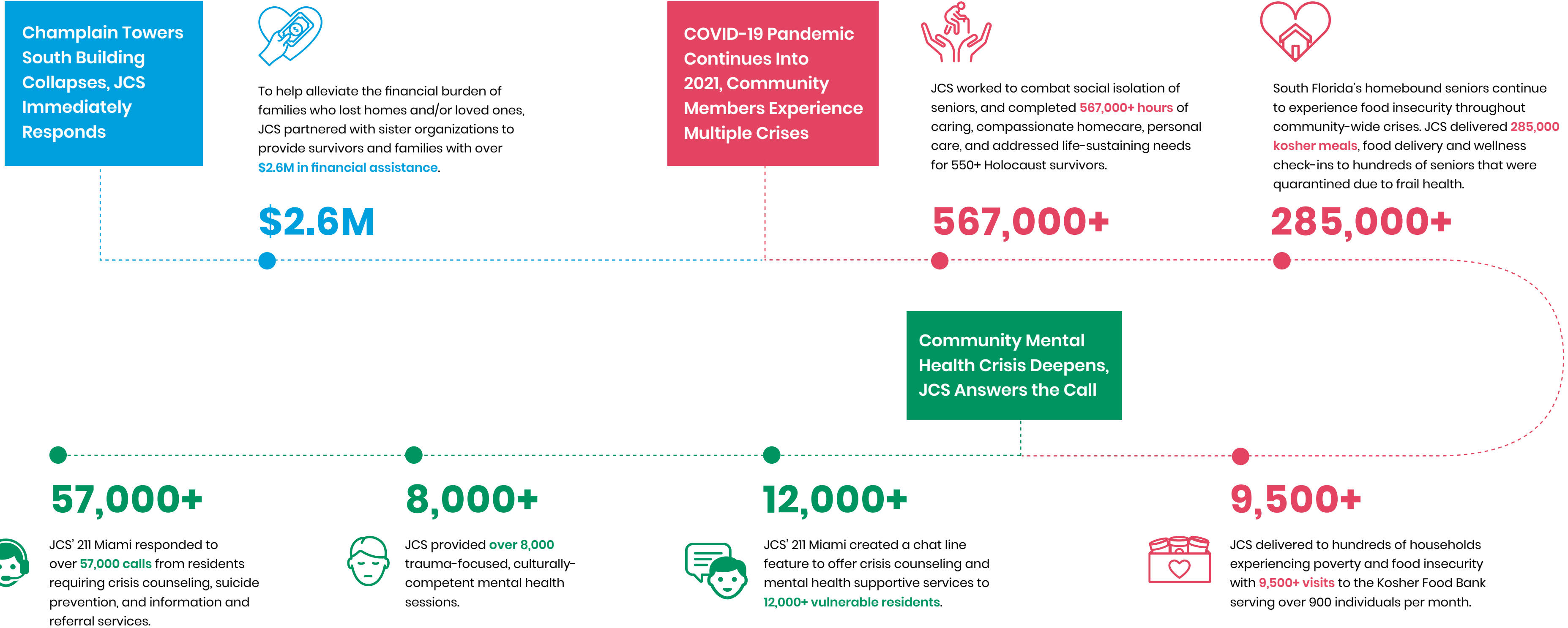
Photo by Anna Moneymaker/Getty Images



JCS' Impact

JCS is a welcoming, affirming, and inclusive organization committed to serving all members of society regardless of gender identity, ability to pay, immigration status, religious affiliation, age, race, sexual orientation or abilities.

If you or someone you know needs information and referrals, please call JCS' 211 Miami by dialing 211. To inquire about JCS' services, contact Access Services at 305-576-6550.

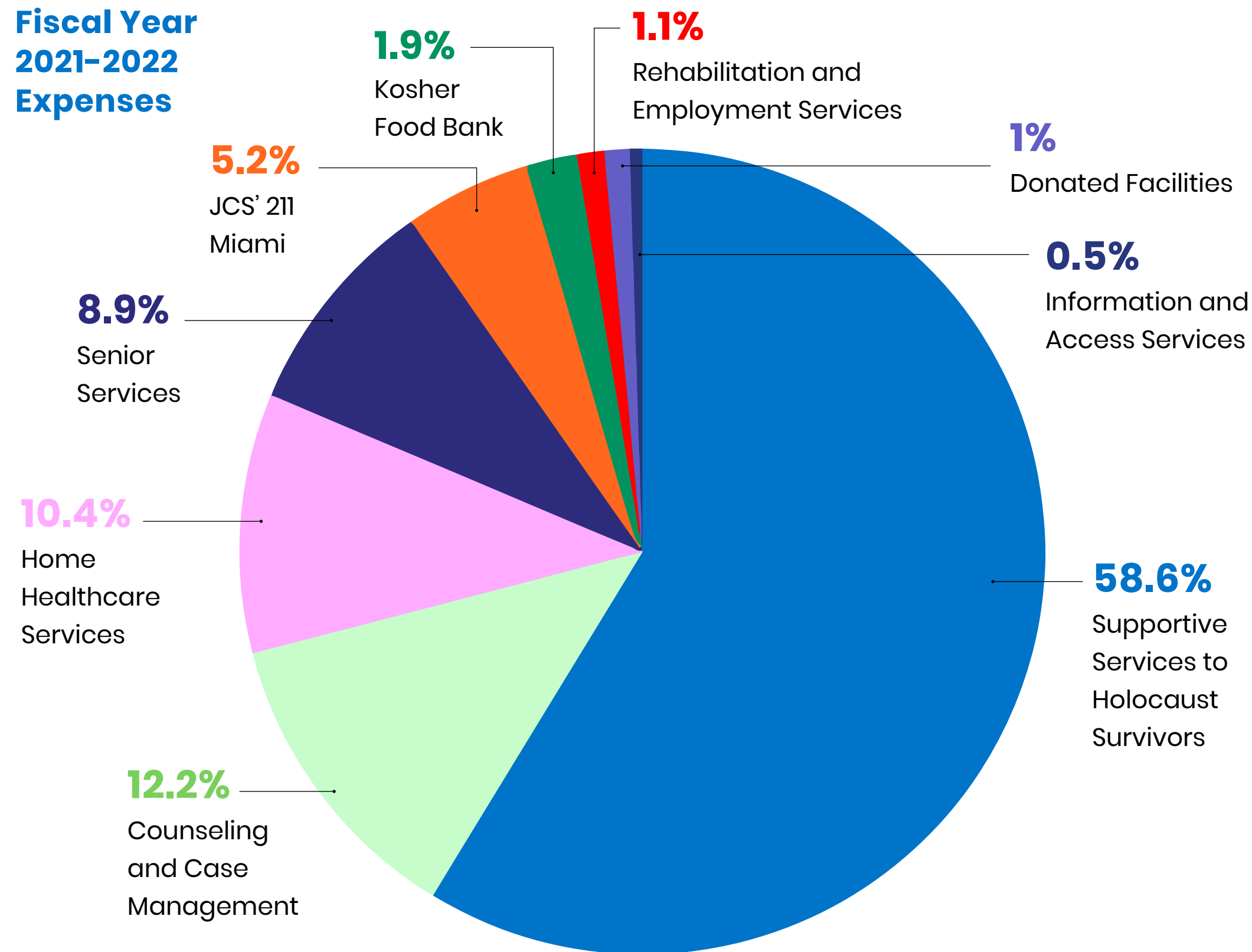


A Year in Review

Fiscal Year 2021-2022 Revenue

Conference on Jewish Material Claims Against Germany	\$16,146,972
Fee For Service	\$2,793,124
Charitable Donations	\$2,641,128
Greater Miami Jewish Federation	\$1,944,174
The Children's Trust	\$1,462,580
Alliance for Aging	\$1,454,640
Miami-Dade County	\$1,053,550
United Way of Miami-Dade County	\$1,047,734
Federal Grants	\$666,614
University of Miami	\$535,886
Lifeline Spanish	\$517,522
Thriving Mind South Florida	\$490,331
GMJF Covid Relief Funds	\$440,017
LSP	\$403,926
Miami Dade Public School (Donated Facility)	\$375,000
JRAP	\$325,090
FEMA	\$302,629
Other Grant Revenue	\$291,358
State of Florida	\$251,930
MYFLVET	\$128,296
NJHSA	\$70,797
Additional 211 Funding	\$66,824
Miami Marlins Foundation	\$60,697
State of Florida Holocaust Reparations	\$59,119
City Wide Grant	\$45,184
FDOT	\$30,507
City Of Miami Beach	\$13,430
Other Revenue	\$5,423
Investment Income	\$5,186
Interest Income	\$4,190
211 Broward	\$1,965
Total Revenue	\$ 33,635,822

Fiscal Year 2021-2022 Expenses



At JCS, “COMMUNITY” is Our Middle Name



Peter Routsis-Arroyo from Catholic Charities of the Archdiocese of Miami Inc., Khalid Mirza from Islamic Center of Greater Miami, Margie and Mark Buchbinder from Temple Beth Am, Miriam Singer from Jewish Community Services of South Florida, Shelley Niceley Groff from Temple Beth Sholom and Rabbi Jeremy Barras from Temple Beth Am



JCS' Christina Lalama, LMHC, participating in a panel discussion with Javier Romero on Univision.



JCS Board Member Yolanda Valencia visiting a Holocaust survivor client at home in celebration of Passover during JCS' Matzah Mitzvah



Xiomara Escoto, Carmen Vargas, Justin Valdes, and Norma Ferrer celebrating Masada Homecare's 25th anniversary



Michelle Labgold from Greater Miami Jewish Federation, Bob Merlin from JCS' Board of Directors, and Senator Shevrin Jones from the Florida Senate at JCS' Annual Meeting



Coralie Patterson, Richard Shutes, and Tiffany Hernandez participating in Jackson Health Foundation's "Mind Your Health" event



Our Community's Safety Net

OUR MISSION

The mission of Jewish Community Services is to improve the quality of life and self-sufficiency of the Jewish and broader communities throughout South Florida in accordance with Jewish values.

OUR VISION

The vision of Jewish Community Services is to be recognized as the leading provider of innovative services and programs that address existing and emerging social service needs.

Jewish Community Services of South Florida
12000 Biscayne Blvd., Suite 303 Miami, FL 33181
www.jcsfl.org

JCS' 211 Miami Helpline

2-1-1

Administration

305-899-1587

988 Suicide & Crisis Lifeline

9-8-8

TTY

786-709-9431